



Mingo Creek Park  
Observatory

# The Guide Star

Newsletter of the Amateur Astronomers Association of Pittsburgh, Inc.

Founded June 9, 1929 by Chester B. Roe and Leo J. Scanlon

Website: [3ap.org](http://3ap.org)



Nicholas E. Wagman  
Observatory

June 2010

Vol. 44, No. 6

## INSIDE THIS ISSUE...

Kohman Family Thank You	1
Wagman Picnic Reminder	1
Celestial Revisions	1
Treasurer's Report	2
Items For Sale	3
New Members	3
New Planetarium Pictures	4
Calendar	5

his documents for pictures of eclipses. He printed several and we had them framed a few days before he died according to his instructions as to how they should be matted and framed. They hung where he could see them and he had them removed from the wall and brought to him for closer inspection daily until the day he died.

He died on April 28 at 03:45, a clear night with a full moon, perfect conditions for a stellar journey. I imagine him now as a single point of light (truly a singularity) careening around the universe, buzzing distant galaxies, peering into black holes, even zooming down one to see what it is like and emerging in an entirely new and different universe, learning all the secrets of eternity.

I know you will keep up his love for observing and for all things in the night sky.

Leslie Kohman  
Paulette Kohman  
Steve Kohman

## WAGMAN PICNIC REMINDER

The June 5th AAAP picnic at Angler's Grove in Deer Lakes Park will begin at 4:00 PM followed by a star party at Wagman Observatory. The club will supply hot dogs and refreshments. Please bring a snack or covered dish to share. Contact Ed Moss for details.

## CELESTIAL REVISIONS

(from the GS editors)

The nice thing about our astronomy science/hobby is that everything is subject to change. There's no room for complacency.

For years astronomy texts have mentioned only two types of supernovae. This may have to change:

<http://www.skyandtelescope.com/community/skyblog/newsblog/94607544.html>

Plus, planetary astronomers have been used to two broad bands across the equatorial region of Jupiter. The following reminds us that this changes from time to time:

<http://www.skyandtelescope.com/observing/home/94107139.html>

## A THANK YOU FROM THE KOHMAN FAMILY

To all AAAP members.



We (Leslie, Paulette, and Steve Kohman and our mother Jane) wish to thank you for your wonderful postings regarding our father Truman and the many of you who attended his memorial service.

Astronomy was the passion of his life, and the last computer project he did was a search through all

## Treasurer's Report

By Mike Meteney

The Following is a summary of the Associations income and expenses and account balances for the first quarter of 2010.

### Income

50-50 raffle	\$ 78.00
Donations	195.00
Interest	1,705.18
Memberships	1,440.00
Sales	95.00

**Total Income** **\$3,513.18**

**Income/expenses** **+541.66**

### Expenses

Raffle prizes	39.00
Printing	514.00
Mail (PO Box)	36.00
March Speaker	150.00
Supplies	107.33
Planetarium Service	400.00
International Dark Sky	250.00
Star Finders	799.00
Utilities-Mingo	
Electric	201.11
Phone	89.60
Utilities-Wagman	
Electric	44.52
Phone	82.88
Porta john	279.27
Security system	64.50

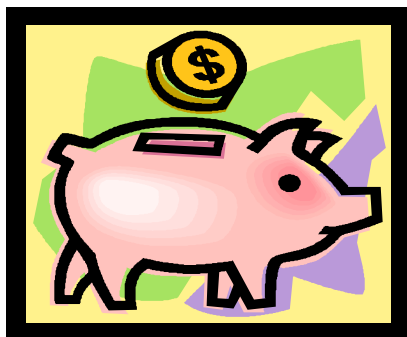
**Total Expenses** **\$2,971.52**

### Accounts

Cash	50.00
Checking	828.58
Savings (PNC)	5,601.01
Savings (Valley View)	22,768.69
Savings (USXCU)	115,028.44

**Total Accounts** **\$144,276.72**

Our accounts, income and expenses have been reviewed by the accounting firm, Thomas Gaitens & Co. and our tax documents and BCO-10 and BCO-23 forms have been filed with the state and federal government.



## ITEMS FOR SALE

### 10" Model LX50:

Includes 10" Schmidt-Cassegrain (f/10) optical tube assembly with EMC Super Multi-Coatings; heavy duty LX200-type fork mount; 5.75" LX worm gear system in R.A., multi-function control panel display on the drive base; DC servo Declination motor; manual and electric slow-motion controls on both axes; setting circles on both axes; keypad handheld controller; 4-speed drive controls on both axes; battery compartment accepting (user-supplied) AA-size batteries; 25 ft. power cord for telescope operation from 12v. auto cigarette lighter plug; 8 x 50mm viewfinder with crosshairs; 1.25" diagonal prism; MA25mm multi-coated eyepiece (1.25"); standard equatorial wedge with elevation scale, bubble level, and azimuth control; and complete operating instructions.

### Accessories

In addition to the basic components described above, the scope includes the following accessories/upgrades:

- Wedge upgraded from standard wedge to Superwedge
- Meade Tripod
- Dorskocil water resistant case
- Sirius Plossl 7.5mm lens
- Orion 2X 1.25" inch barlow lens
- Orion Tele Extender (for celestial photography)
- T-Ring for 35mm camera

**Asking Price:** \$1,500. If interested, please email Frank DiGnazio at [fjd3185@comcast.net](mailto:fjd3185@comcast.net).

**Like new Meade LX75 SN-6AT Schmidt-Newtonian** with AutoStar, Lunar Planetary Imager and Autostart Suite Camera.

Telescope is in mint condition. This is an awesome telescope for the intermediate to advanced enthusiast, yet easy enough for a beginner to master.

Includes (8) Meade Super Plossl eyepieces in aluminum carrying case:

Meade Super Plossl 40mm Multi-coated  
 Meade Super Plossl 32mm Multi-coated  
 Meade Super Plossl 26mm Multi-coated  
 Meade Super Plossl 20mm Multi-coated  
 Meade Super Plossl 15mm Multi-coated  
 Meade Super Plossl 12.4mm Multi-coated  
 Meade Super Plossl 9.7mm Multi-coated  
 Meade Super Plossl 6.4mm  
 2x Teleneegative amplifier  
 Moving out of state and must sell  
 If interested Call Jason 724.980.8872

### Meade LX75 SN-6AT

telescope with one eyepiece-26mm. It's in the original shipping box, only removed once for inspection. Never opened the tripod shipping case. Originally paid \$1,200.00 but willing to take the best price over \$600.00. It's never been unpacked, setup, and is still waiting for first light. If anyone is interested I could bring it up to the Next Mingo Star Party. Please contact AAAP member Sam Terry ([Sam\\_Terry@verizon.net](mailto:Sam_Terry@verizon.net))

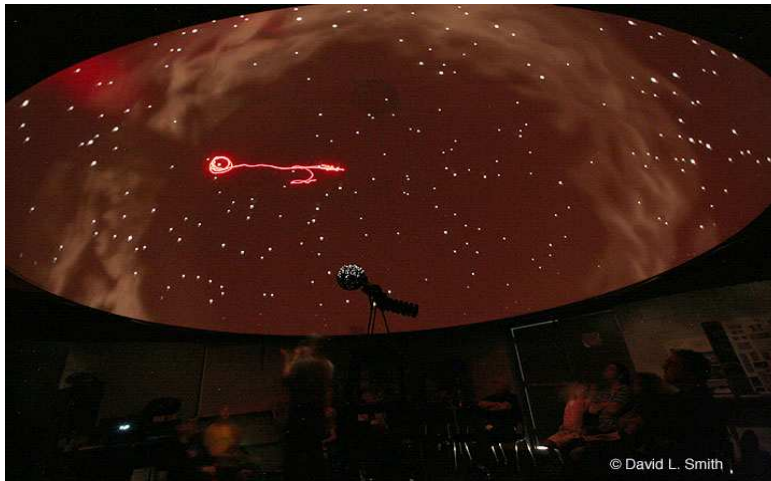


### A Vintage Scope: Coulter 13.1" Dob

F/4.5 in good condition with 26mm eyepiece  
 Contact Bernie Kriger at 412-787-1171

**WELCOME NEW MEMBER**  
 WILLIAM A. WORTH

RECENT PICTURES OF THE PLANETARIUM AT MINGO TAKEN BY DAVE SMITH



June 3:	Moon at Apogee Neptune 5° south of our moon	July 1:	Moon at Apogee
June 4:	Last Qtr. Moon	July 3:	Pallas appears stationary Uranus 7° south of our moon Jupiter 7° south of our moon
June 5:	<b>AAAP Picnic</b>	July 4:	Last Qtr. Moon
June 6:	Jupiter 7° south of our moon Mars 0.9° north of Regulus Uranus 6° south of our moon	July 5:	Uranus appears stationary
June 9:	Venus 5° south of Pollux	July 6:	Earth at aphelion
June 10-13:	Cherry Springs Star Party begins Mercury 5° south of our moon	July 9-11:	Mason Dixon Star Party
June 11:	Per AAAP Calendar MCPO MEMBERS ONLY SP	July 9:	MCPO Star Party Juno in conjunction with Sun Venus 1.1° north of Regulus
June 12:	MCPO MEMBERS ONLY SP  New Moon	July 10:	MCPO Star Party
June 15:	Venus 4° north of our moon Mercury 5° north of Aldebaran Moon at perigee	July 11:	New Moon
June 17:	Mars 6° north of our moon	July 12:	Mercury 4° north of our moon
June 18:	MCPO Public Star Party NEWO Public Star Party Ceres at opposition	July 13:	Moon at perigee
June 19:	MCPO Public Star Party NEWO Public Star Party First Qtr. Moon Saturn 8° north of our moon	July 14:	Venus 6° north of our moon
June 21:	Summer Solstice	July 16:	MCPO Public Star Party NEWO Public Star Party Mars 6° north of our moon Saturn 8° north of our moon
June 25:	Ceres 1° south of our moon Pluto at opposition	July 17:	MCPO Public Star Party NEWO Public Star Party
June 26:	Full Moon	July 18:	First QTR. Moon
June 28:	Mercury at superior Conjunction	July 24:	Jupiter appears stationary
June 29:	Cranberry Library Star Party	July 25:	Full Moon
June 30:	Neptune 5° south of our moon	July 27:	Mercury 0.3° south of Regulus
		July 28:	Neptune 5° south of our moon Moon at apogee
		July 28-29:	Delta Aquarid Meteor Shower
		July 30:	Uranus 6° south of our moon Passavant Community Star Party
		July 31:	Jupiter 7° south of our moon

**Amateur Astronomers Association of Pittsburgh, Inc.**

*Founded June 9, 1929 by*

*Chester B. Roe and Leo J. Scanlon*

**2009-2010 Executive Officers:**

- President: **Edward Moss**  
[president@3ap.org](mailto:president@3ap.org)
- Vice President: **Craig Lang**  
[vicepresident@3ap.org](mailto:vicepresident@3ap.org)
- Treasurer: **Michael Meteney**  
[treasurer@3ap.org](mailto:treasurer@3ap.org)
- Corresponding Sec: **John Mozer**  
[correspondingsecretary@3ap.org](mailto:correspondingsecretary@3ap.org)
- Recording Sec: **Dennis Derda**  
[recordingsecretary@3ap.org](mailto:recordingsecretary@3ap.org)
- Membership Sec: **Don Hoecker**  
[membershipsecretary@3ap.org](mailto:membershipsecretary@3ap.org)
- Guide Star Editor: **John Cheng**  
[gseditor@3ap.org](mailto:gseditor@3ap.org)

**AAAP Member Dues\*:**

AAAP Dues:	\$24.00
Student Membership (K-12 & full time college student):	\$16.00
Family Membership	\$40.00

**\*Basic Procedure for Paying Dues:**

1. Make check payable to "AAAP Inc."
2. Send check to Michael Meteney, Treasurer, 1070 Sugar Run Road; Venetia, PA 15367-1514



**Please submit any articles for the Guide Star to the Guide Star Editors at [gseditor@3ap.org](mailto:gseditor@3ap.org) by the 20th of each month.**

**\*\*Some websites may need to be copied and pasted in your browser to view them\*\***

NON-PROFIT ORG.  
U.S. POSTAGE  
PAID  
PITTSBURGH, PA  
PERMIT NO. 394

**AMATEUR ASTRONOMERS ASSOCIATION  
OF PITTSBURGH, INC.  
1070 Sugar Run Road  
VENETIA, PA 15367-1514  
ADDRESS SERVICE REQUESTED**